

Techletter's[®] Quarterly Review

Covering *Techletter*[®] issues October through December 2010

Name _____

Date _____

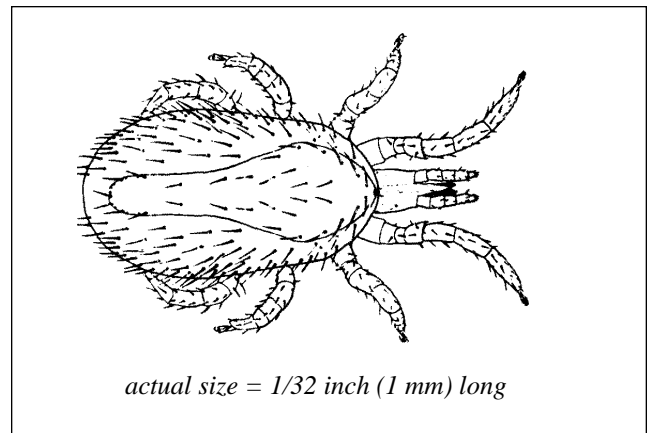
Grade _____

(number correct x 5) *

* plus add any bonus points

Circle or fill in the correct answer:

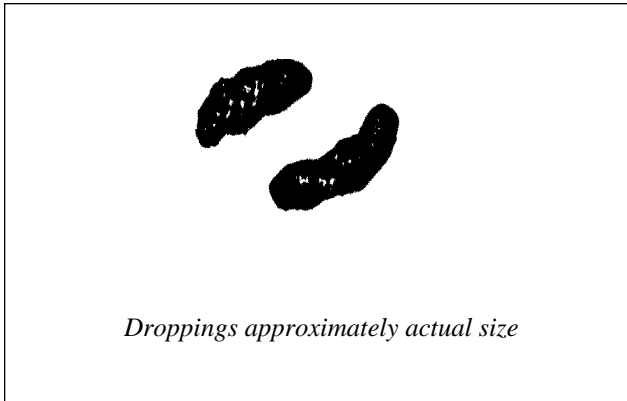
- Insect specimens to be identified should be packed in ziplock bags of water for shipping. TRUE or FALSE?**
- Which one of these statements is true about the brown marmorated stink bug?**
 - it is found throughout the U.S.
 - it can bite if threatened
 - it feeds on other insects
 - it moves into buildings in the fall
- Rodent monitoring blocks contain only low levels of rodenticide. TRUE or FALSE?**
- Which one of these is proper procedure when baiting for German cockroaches?**
 - make a few large bait placements
 - place bait in areas with cockroach spotting
 - place bait in open areas
 - Leave old bait stations in place when adding new ones
- EPA has tested the effectiveness of all pesticides it has registered for control of bed bugs. TRUE or FALSE?**
- Which one of these is the most likely place in which to find springtails?**
 - in boxes of stored woolen fabrics
 - in an old bag of flour in a cupboard
 - in the cabinet under a leaky kitchen sink
 - on a wall by an outside yard light
- Which statement is true about baiting for the Argentine ant?**
 - spring is the best time to bait
 - they feed only on sugar-based baits
 - gel baits are the most effective
 - to kill the colony, baits must be slow-acting
- The biting pest shown below is a:**
 - lone star tick
 - rat mite
 - brown recluse spider
 - bed bug



- The pest shown above is found most often in or near the beds of humans. TRUE or FALSE?**

10. The droppings below belong to:

- a) house mouse
- b) Norway rat
- c) gray squirrel
- d) Oriental cockroach



11. When inspecting for bed bugs, you should never remove the gauze fabric on the bottom of the box spring. TRUE or FALSE?

12. To kill bed bugs with a heat treatment, you should raise the temperature to 140°F. for 3 hours. TRUE or FALSE?

13. You can often identify a gnawing animal by the size and shape of its tooth marks. TRUE or FALSE?

14. Drain flies feed on:

- a) rotting fruits and vegetables
- b) the semi-liquid scum in drains
- c) house fly larvae
- d) dead insects or dead animals

15. A hose that must deliver a large volume of product should have a high inside diameter measurement. TRUE or FALSE?

16. Fresh mouse droppings are gray and crumble easily. TRUE or FALSE?

17. You should never use a liquid insecticide to treat clothes moths infesting a trophy mount. TRUE or FALSE?

18. Tracking patches to detect rodent activity:

- a) use a thin coating of rodenticide tracking powder
- b) kill rodents that feed on the patch
- c) are used to show rodent footprints
- d) all of the above

19. You should treat schools for head lice over the weekend break. TRUE or FALSE?

20. In which situation would an insect growth regulator be a good choice for cockroach control?

- a) when roaches show resistance to standard insecticides
- b) when you want extended control
- c) when you are using cockroach baits
- d) all of the above

Bonus Question (10 extra points)

Which other pest ant is very similar to the Argentine ant in appearance and behavior, but has a rotten coconut smell when crushed?

ANSWER: _____

Answers will appear in the next issue